

# An example session for analyzing quantitative MRI data in the Multi-Parameter Mapping framework

Jörg Polzehl and Karsten Tabelow

May 1, 2020

This document illustrates the workflow of analyzing quantitative Magnetic Resonance Imaging (qMRI) data in the framework of Multi-Parameter Mapping (MPM) experiments (Weiskopf et al. 2013). The example uses artificial noisy MPM data based on the analysis results of a publicly available MPM dataset, see <http://hmri.info>: The original data was modeled using the ESTATICS model (Weiskopf et al. 2014). Its four adaptively smoothed parameter maps were used to generate the artificial data on a selected (small) sub cube with Rician noise by creating corresponding signal echos following the ESTATICS model equation. The artificial data is supplied with this package together with the smoothed quantitative maps (relaxation rates  $R_1$  and  $R_2^*$ , proton density  $PD$ , and magnetization transfer  $MT$ ) from the original data for ground truth comparison.

Specifically, the data consist of, in total, 22 image volumes in NIfTI format that correspond to multiple echos of three different imaging modalities, i.e., 8 echos of  $T_1$  weighted images, 8 echos of proton density ( $PD$ ) weighted images and 6 images from a dual excitation FLASH magnetization transfer ( $MT$ ) weighted sequence. Each echo in the image volumes is “acquired” at an echo time, repetition time and flip angle, that equal those of the original experiment. The quantitative maps suffer from a  $B_1$  transmit (and receive) bias, that can be corrected for, if the smooth  $B_1$  correction field that affects the local flip angle is known (Tabelow et al. 2019). An estimate for this field is supplied with the package, too.

For an more extended introduction we refer to Polzehl and Tabelow 2019 Chapter 6.

## 1 Reading the MPM data

First, we specify the directory where the data are stored within the package

```
> dataDir <- system.file("extdata", package = "qMRI")
```

The filenames of the data correspond to the weighting of the imaging. We create the paths of the data files including the  $B_1$  field map a mask file (which in this cases describes the whole data cube, only):

```

> t1Names <- paste0("t1w_", 1:8, ".nii.gz")
> mtNames <- paste0("mtw_", 1:6, ".nii.gz")
> pdNames <- paste0("pdw_", 1:8, ".nii.gz")
> t1Files <- file.path(dataDir, t1Names)
> mtFiles <- file.path(dataDir, mtNames)
> pdFiles <- file.path(dataDir, pdNames)
> B1File <- file.path(dataDir, "B1map.nii.gz")
> maskFile <- file.path(dataDir, "mask.nii.gz")

```

The acquisition parameters (echo time ( $TE$ ) in milliseconds, repetition time ( $TR$ ) in milliseconds and flip angle ( $FA$ ) in degree) for each volume are replicated from the original MPM data:

```

> TE <- c(2.3, 4.6, 6.9, 9.2, 11.5, 13.8, 16.1, 18.4,
+        2.3, 4.6, 6.9, 9.2, 11.5, 13.8,
+        2.3, 4.6, 6.9, 9.2, 11.5, 13.8, 16.1, 18.4)
> TR <- rep(25, 22)
> FA <- c(rep(21, 8), rep(6, 6), rep(6, 8))

```

The package **pkg** provides a function `readMPMData` to read the data into an R session

```

> library(qMRI)
> mpm <- readMPMData(t1Files, pdFiles, mtFiles,
+                   maskFile,
+                   TR = TR, TE = TE, FA = FA,
+                   verbose = FALSE)

```

which creates an object `mpm` of class "MPMdata".

## 2 Parameter estimation (ESTATICS)

The ESTATICS model (Weiskopf et al. 2014) describes the data from an MPM sequence by the relaxation rate  $R_2^*$  for the signal decay with the echo time  $TE$  and the three absolute values for  $TE = 0$ . Parameters in this model can be estimated by

```

> modelMPM <- estimateESTATICS(mpm,
+                             method = "NLR",
+                             verbose = FALSE)

```

using nonlinear least-squares regression. However, the low signal-to-noise ratio (SNR) in the data leads to a bias for the parameter estimates, see Polzehl and Tabelow 2016 and Tabelow et al. 2017. Therefore the parameter estimation can alternatively be performed by

```

> sigma <- array(50, mpm$sdim)
> modelMPMQL <- estimateESTATICS(mpm,
+                               method = "QL",
+                               sigma = sigma,
+                               L = 1,
+                               verbose = FALSE)

```

using a quasi-likelihood formulation (Polzehl and Tabelow 2016; Tabelow et al. 2017). It avoids, in case of low SNR, the bias caused by the skewness of the Rician signal distribution. The application of this method requires to specify the scale parameter  $\sigma$  of the Rician distribution, which in this case of artificial data is explicitly known. Alternatively, a map of scale parameters could be estimated using function `awslsigmc` from package `dti`

```
> ddata <- extract(mpm, "ddata")
> mask <- extract(mpm, "mask")
> if(require(dti)) sigma <- awlsigmc(ddata[1,,,], 16, mask)$sigma
```

see Tabelow, Voss, and Polzehl 2015 for details of the method.

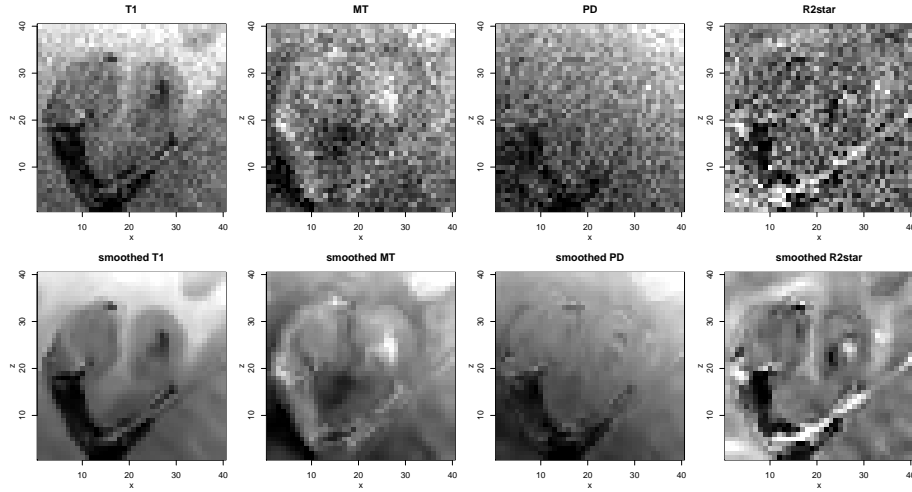
### 3 Structural adaptive smoothing

Data from MPM sequences suffer from noise hindering the quality of the estimated quantitative maps. Mohammadi et al. 2017 introduced a structural adaptive smoothing method that can be used to reduce the variability of the estimated parameter maps and, if `mpmData` is specified, the observed image data:

```
> # use setCores(ncores) to enable openMP parallelization
> setCores(2, reprot=FALSE)
> modelMPMQLsp1 <- smoothESTATICS(modelMPMQL,
+                               mpmData = extract(mpm, "ddata"),
+                               kstar = 16,
+                               alpha = 0.004,
+                               patchsize = 1,
+                               verbose = FALSE)
```

The package `qMRI` implements an extension of the method that uses the comparison of local patches for adaptive smoothing (Polzehl, Papafitsoros, and Tabelow 2018). The resulting ESTATICS unsmoothed and smoothed parameter maps for the central coronal slice can be illustrated by

```
> library(adimpro)
> rimage.options(zquantiles = c(.01, .99), ylab = "z")
> par(mfrow = c(2, 4),
+     mar = c(3, 3, 3, 1), mgp = c(2, 1, 0))
> pnames <- c("T1", "MT", "PD", "R2star")
> for (i in 1:4) {
+   modelCoeff <- extract(modelMPMQL, "modelCoeff")
+   rimage(modelCoeff[i, , 11, ])
+   title(pnames[i])
+ }
> for (i in 1:4) {
+   modelCoeff <- extract(modelMPMQLsp1, "modelCoeff")
+   rimage(modelCoeff[i, , 11, ])
+   title(paste("smoothed", pnames[i]))
+ }
```



The preceding code also applies the adaptive smoothing not only to the parameter maps of the ESTATICS model, but also to the data itself. From this new parameter maps can be estimated by the quasi-likelihood formulation and thus avoiding the bias due to the skewness in the signal distribution:

```
> modelMPM2 <- estimateESTATICS(mpmSP1,
+                               method = "NLR",
+                               L = 1,
+                               verbose = FALSE)
```

Note, that we again employ the same Rician scale parameter, i.e., of the unprocessed data, cf. the discussion in Polzehl and Tabelow 2016.

## 4 Calculating quantitative maps

Finally, from the (un)smoothed parameter maps of the ESTATICS model, we can compute the quantitative  $R_1$ ,  $R_2^*$ ,  $PD$  and  $MT$  maps

```
> qMRIMaps <- calculateQI(modelMPM,
+                           b1File = B1File,
+                           TR2 = 3.4)
```

```
reading B1 correction file
calculating R1 ... Spoiling correction ... v3* 0.8mm R4 protocol
Spoiling correction ... v3* 0.8mm R4 protocol
done
calculating PD ... done
calculating MT ... done
```

```
> qMRIQLMaps <- calculateQI(modelMPMQL,
+                             b1File = B1File,
+                             TR2 = 3.4)
```

```
reading B1 correction file
calculating R1 ... Spoiling correction ... v3* 0.8mm R4 protocol
```

```

Spoiling correction ... v3* 0.8mm R4 protocol
done
calculating PD ... done
calculating MT ... done

> qMRIQLSmoothedp1Maps <- calculateQI(modelMPMQLsp1,
+                                     b1File = B1File,
+                                     TR2 = 3.4)

reading B1 correction file
calculating R1 ... Spoiling correction ... v3* 0.8mm R4 protocol
Spoiling correction ... v3* 0.8mm R4 protocol
done
calculating PD ... done
calculating MT ... done

> qMRIMaps2 <- calculateQI(modelMPM2,
+                           b1File = B1File,
+                           TR2 = 3.4)

reading B1 correction file
calculating R1 ... Spoiling correction ... v3* 0.8mm R4 protocol
Spoiling correction ... v3* 0.8mm R4 protocol
done
calculating PD ... done
calculating MT ... done

```

The calculation requires the  $B_1$ -bias field, if available, and the  $TR_2$  parameter of the MTw sequence (Tabelow et al. 2019).

We show the central coronal slice of the estimated quantitative maps together with the maps for the ground truth used to generate the data

```

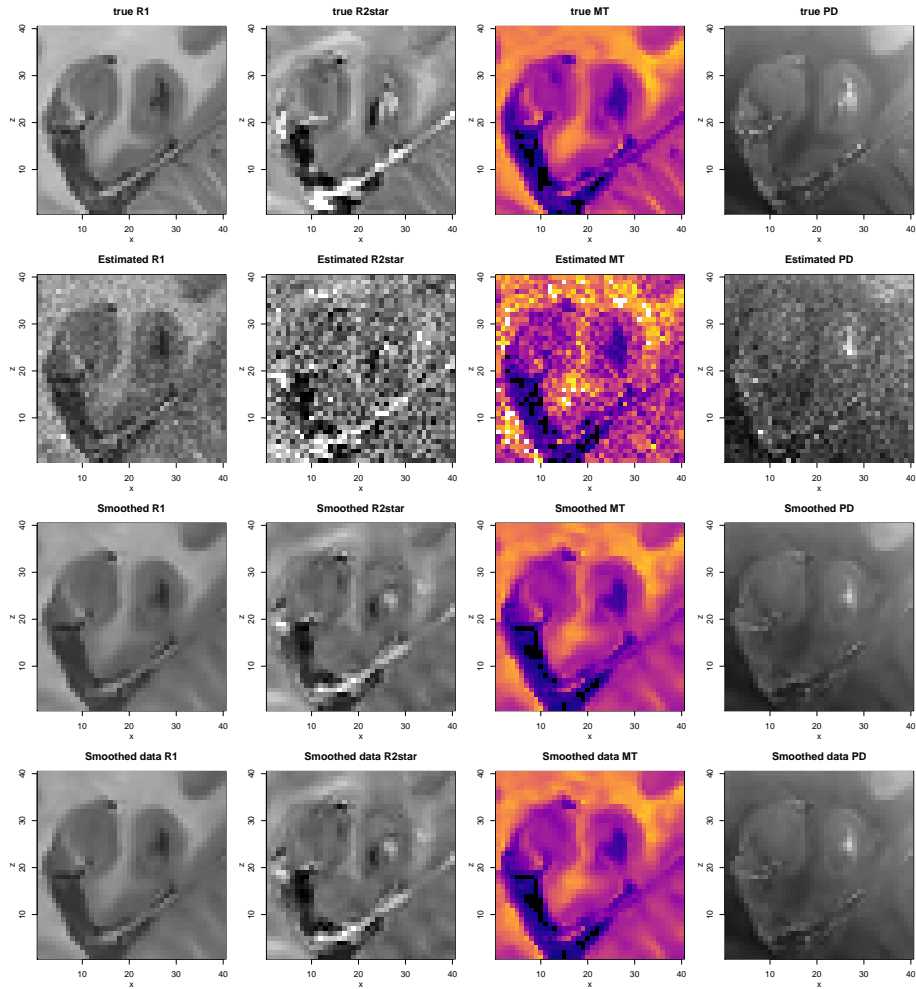
> library(oro.nifti)
> zlim <- matrix(c(0, 0, 0, 3000,
+                 1.5, 35, 2, 10000),
+                 4, 2)
> R1 <- readNIfTI(file.path(dataDir, "R1map.nii.gz"))
> R2star <- readNIfTI(file.path(dataDir, "R2starmap.nii.gz"))
> MT <- readNIfTI(file.path(dataDir, "MTmap.nii.gz"))
> PD <- readNIfTI(file.path(dataDir, "PDmap.nii.gz"))
> rimage.options(ylab = "z")
> par(mfrow = c(4, 4),
+     mar = c(3, 3, 3, 1), mgp = c(2, 1, 0))
> nmaps <- c("R1", "R2star", "MT", "PD")
> rimage(R1[, 11, ], zlim = zlim[1, ],
+       main = paste("true", nmaps[1]))
> rimage(R2star[, 11, ], zlim = zlim[2, ],
+       main = paste("true", nmaps[2]))
> rimage(MT[, 11, ], zlim = zlim[3, ],
+       main = paste("true", nmaps[3]),
+       col = colMT)

```

```

> rimage(PD[, 11, ], zlim = zlim[4, ],
+       main = paste("true", nmaps[4]))
> qmap1 <- extract(qMRIQLMaps, nmaps)
> for (i in 1:4) rimage(qmap1[[i]][, 11, ], zlim = zlim[i, ],
+       main = paste("Estimated", nmaps[i]),
+       col = if(i==3) colMT else grey(0:225/255))
> qmap2 <- extract(qMRIQLSmoothedp1Maps, nmaps)
> for (i in 1:4) rimage(qmap2[[i]][, 11, ], zlim = zlim[i, ],
+       main = paste("Smoothed", nmaps[i]),
+       col = if(i==3) colMT else grey(0:225/255))
> qmap3 <- extract(qMRIMaps2, nmaps)
> for (i in 1:4) rimage(qmap3[[i]][, 11, ], zlim = zlim[i, ],
+       main = paste("Smoothed data", nmaps[i]),
+       col = if(i==3) colMT else grey(0:225/255))

```



The color scheme `colMT` is designed to emphasize the grey matter (magenta) / white matter (yellow) contrast in the MT image with a `zlim = c(0,2)`.

Using the quasi-likelihood estimation method is, for low SNR, supposed to reduce the bias caused by the skewness of the Rician distribution, cf. Polzehl

and Tabelow 2016 and Tabelow et al. 2017.

```
> qmap0 <- extract(qMRIMaps,nmaps)
> mask <- extract(mpm,"mask")
> cat("\n",
+     "Bias of NLR estimates\n",
+     "R1", mean((qmap0$R1-R1)[mask]),
+     "R2star", mean((qmap0$R2star-R2star)[mask]),
+     "MT", mean((qmap0$MT-MT)[mask]),
+     "PD", mean((qmap0$PD-PD)[mask]), "\n",
+     "Bias of QL estimates\n",
+     "R1", mean((qmap1$R1-R1)[mask]),
+     "R2star", mean((qmap1$R2star-R2star)[mask]),
+     "MT", mean((qmap1$MT-MT)[mask]),
+     "PD", mean((qmap1$PD-PD)[mask]), "\n")
```

```
Bias of NLR estimates
R1 0.00853 R2star -0.0477 MT -0.00195 PD 64.3
Bias of QL estimates
R1 0.00325 R2star 0.342 MT 0.021 PD 68.5
```

Let's see which estimate performs best with respect to the root mean squared error (RMSE):

```
> cat("\n",
+     "Root mean squared error of NLR estimate\n",
+     "R1", sqrt(mean((qmap0$R1-R1)[mask]^2)),
+     "R2star", sqrt(mean((qmap0$R2star-R2star)[mask]^2)),
+     "MT", sqrt(mean((qmap0$MT-MT)[mask]^2)),
+     "PD", sqrt(mean((qmap0$PD-PD)[mask]^2)), "\n",
+     "Root mean squared error of QL estimate\n",
+     "R1", sqrt(mean((qmap1$R1-R1)[mask]^2)),
+     "R2star", sqrt(mean((qmap1$R2star-R2star)[mask]^2)),
+     "MT", sqrt(mean((qmap1$MT-MT)[mask]^2)),
+     "PD", sqrt(mean((qmap1$PD-PD)[mask]^2)), "\n",
+     "Root mean squared error of smoothed QL estimate\n",
+     "R1", sqrt(mean((qmap2$R1-R1)[mask]^2)),
+     "R2star", sqrt(mean((qmap2$R2star-R2star)[mask]^2)),
+     "MT", sqrt(mean((qmap2$MT-MT)[mask]^2)),
+     "PD", sqrt(mean((qmap2$PD-PD)[mask]^2)), "\n",
+     "Root mean squared error of estimate from smoothed data\n",
+     "R1", sqrt(mean((qmap3$R1-R1)[mask]^2)),
+     "R2star", sqrt(mean((qmap3$R2star-R2star)[mask]^2)),
+     "MT", sqrt(mean((qmap3$MT-MT)[mask]^2)),
+     "PD", sqrt(mean((qmap3$PD-PD)[mask]^2)), "\n")
```

```
Root mean squared error of NLR estimate
R1 0.0919 R2star 6.08 MT 0.26 PD 540
Root mean squared error of QL estimate
R1 0.0932 R2star 6.24 MT 0.273 PD 574
Root mean squared error of smoothed QL estimate
```

```

R1 0.0457 R2star 3.16 MT 0.0983 PD 217
Root mean squared error of estimate from smoothed data
R1 0.0457 R2star 3.23 MT 0.0989 PD 221

```

For interpretation we need to compare this to the mean parameter values

```

> cat("Mean R1", mean(R1[mask]), "Mean R2star",
+     mean(R2star[mask]), "Mean MT", mean(MT[mask]),
+     "Mean PD", mean(PD[mask]), "\n")

```

```

Mean R1 0.769 Mean R2star 18.4 Mean MT 0.895 Mean PD 5706

```

We see here, that using the quasi-likelihood estimation is supposed to reduce the bias of the estimated ESTATICS parameters, but does so at the cost of a slightly increased variance. Structural adaptive smoothing leads to a considerable reduction in RMSE. Modelling of the spatially smoothed data has the additional effect of reduced bias originating from data variability.

## References

- Mohammadi, S. et al. (2017). *Simultaneous adaptive smoothing of relaxometry and quantitative magnetization transfer mapping*. Preprint 2432. WIAS. DOI: 10.20347/WIAS.PREPRINT.2432.
- Polzehl, J., K. Papafitsoros, and K. Tabelow (2018). *Patch-wise adaptive weights smoothing*. Preprint 2520. WIAS. DOI: 10.20347/WIAS.PREPRINT.2520.
- Polzehl, J. and K. Tabelow (2016). “Low SNR in diffusion MRI models”. In: *J. Am. Stat. Assoc.* 111.516, pp. 1480–1490. DOI: 10.1080/01621459.2016.1222284.
- Polzehl, Jörg and Karsten Tabelow (2019). *Magnetic Resonance Brain Imaging: Modeling and Data Analysis Using R*. Use R! Springer. DOI: 10.1007/978-3-030-29184-6.
- Tabelow, K., H. U. Voss, and J. Polzehl (2015). “Local estimation of the noise level in MRI using structural adaptation”. In: *Med. Image Anal.* 20, pp. 76–86.
- Tabelow, K. et al. (2017). “Removing the estimation bias due to the noise floor in multi-parameter maps”. In: *Proceedings of ISMRM 2017*.
- Tabelow, K. et al. (2019). “hMRI – A toolbox for quantitative MRI in neuroscience and clinical research”. In: *NeuroImage* 194, pp. 191–210. DOI: 10.1016/j.neuroimage.2019.01.029.
- Weiskopf, N. et al. (2013). “Quantitative multi-parameter mapping of R1, PD(\*), MT, and R2(\*) at 3T: a multi-center validation.” eng. In: *Front. Neurosci.* 7, p. 95. DOI: 10.3389/fnins.2013.00095.
- Weiskopf, N. et al. (2014). “Estimating the apparent transverse relaxation time (R2\*) from images with different contrasts (ESTATICS) reduces motion artifacts”. In: *Front. Neurosci.* 8.278, pp. 1–10.